



Engender
Equality



EDUCATION & TRAINING

SPECIALISED FAMILY VIOLENCE EDUCATION & TRAINING

Because we recognise that family violence is a whole-of-community issue, engender equality is passionate about empowering people to make a stand against family violence and abuse.

Engender Equality draws on its 30 years of experience in delivering specialised education and training.

SPECIALISED | WHITE RIBBON ENDORSED | EXPERTLY DELIVERED

STATE-WIDE 03 6278 9090 | admin@engenderequality.org.au



ABOUT OUR TRAINING

ABOUT

Engender equality education and training:

- Can range from a keynote address to a hands-on, activity-based workshop
- Varies in duration from an hour or two, to in-depth weekly courses
- Is informative and engaging
- Is supported by our locally-sourced information and world-class, evidence-based resources

AUDIENCES

From small groups to large audiences, our education and training is suitable for:

- Workplace training
- Corporate events and conferences
- Clubs & community groups
- Front line service providers

OUR FACILITATORS

Our training and education packages are designed and led by experienced and qualified learning and development educators.

TAILORED TO YOUR NEEDS

We tailor our material to meet your time-frame and budget. We are passionate about helping the community prevent and respond to family violence. We welcome opportunities to address topics like:

- Gender issues and workplace culture
- Changing attitudes towards violence and abuse
- Working in a family violence framework

“Engender Equality are leading experts in family violence and their training is of exceptional quality.”

Miles Smith, Business Manager - Natural Sciences, University of Tasmania

OUR WORKSHOPS

KEYNOTE ADDRESS

Alina Thomas (CEO, Engender Equality) is a sought-after spokesperson on family violence and gender inequality in Tasmania. With insight and expertise, Alina delivers an impassioned, thought-provoking and motivational keynote address.

INTRODUCTION TO FAMILY VIOLENCE ~ 1-2 HOURS

Drawing on local expertise, this workshop is an introduction to family violence, what it looks like and how common it is.

- Helps participants recognise and respond to family violence.

WHITE RIBBON ~ 3-6 HOURS

This workplace workshop provides an overview of the tools and strategies participants need to promote gender equality and prevent violence against women.

- Designed to improve workplace culture, office safety and morale; and increase staff's knowledge and skills, so they can address violence against women and children.

MEN AS ADVOCATES ~ 3 HOURS

This is a specialised workshop to help attendees understand family violence.

- Supports men to lead violence-prevention in our community by empowering them to actively shape community attitudes and behaviours.

WORKPLACE EQUALITY & RESPECT ~ ½-1 DAY

This workshop takes a deepening approach to preventing violence against women and children, promoting cultural change in the workplace in line with the Our Watch workplace equality and respect standards.

- Promotes and embeds gender equality and respect into your workplace culture through an organisational change process.

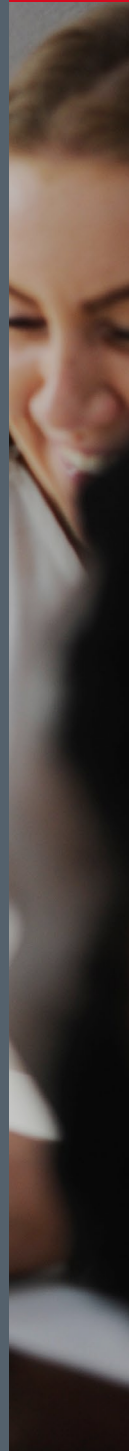
CHANGE THE STORY ~ 1-2 DAYS

This high-quality workshop is based on international, evidence-based research about family violence.

- Based around Our Watch, participants will tap into a coordinated, national framework showing that when it comes to family violence, gender inequality is the core of the problem and at the heart of the solution.

CHAMPIONS PROGRAM ~ 10-12 WEEKLY SESSIONS

This program is ideal for people who want to become supporters for friends, family members and colleagues who may be experiencing family violence.





Engender
Equality



READY TO BOOK?

FEE STRUCTURE

Engender education and training workshops are provided at a fee for service.

For more information or a quote on a package for your organisation, please contact us by phoning 6278 9090 or by emailing admin@engenderequality.org.au

INSPIRING CHANGE | MOTIVATING ACTION

Engender Equality is funded by the crown through the Tasmanian Government's Safe Home, Safe Families: Tasmania's Family Violence Action Plan 2015-2020



STATE-WIDE 03 6278 9090 | admin@engenderequality.org.au